

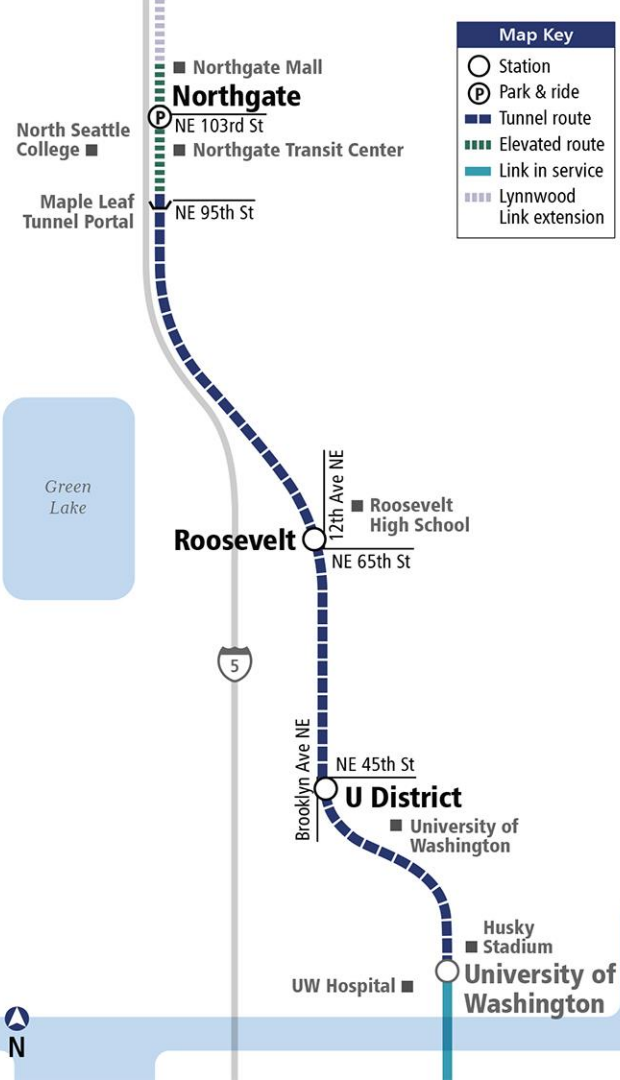


***Mercer Stakeholder Presentation  
Northgate Link***

*November 5, 2020*

# Agenda

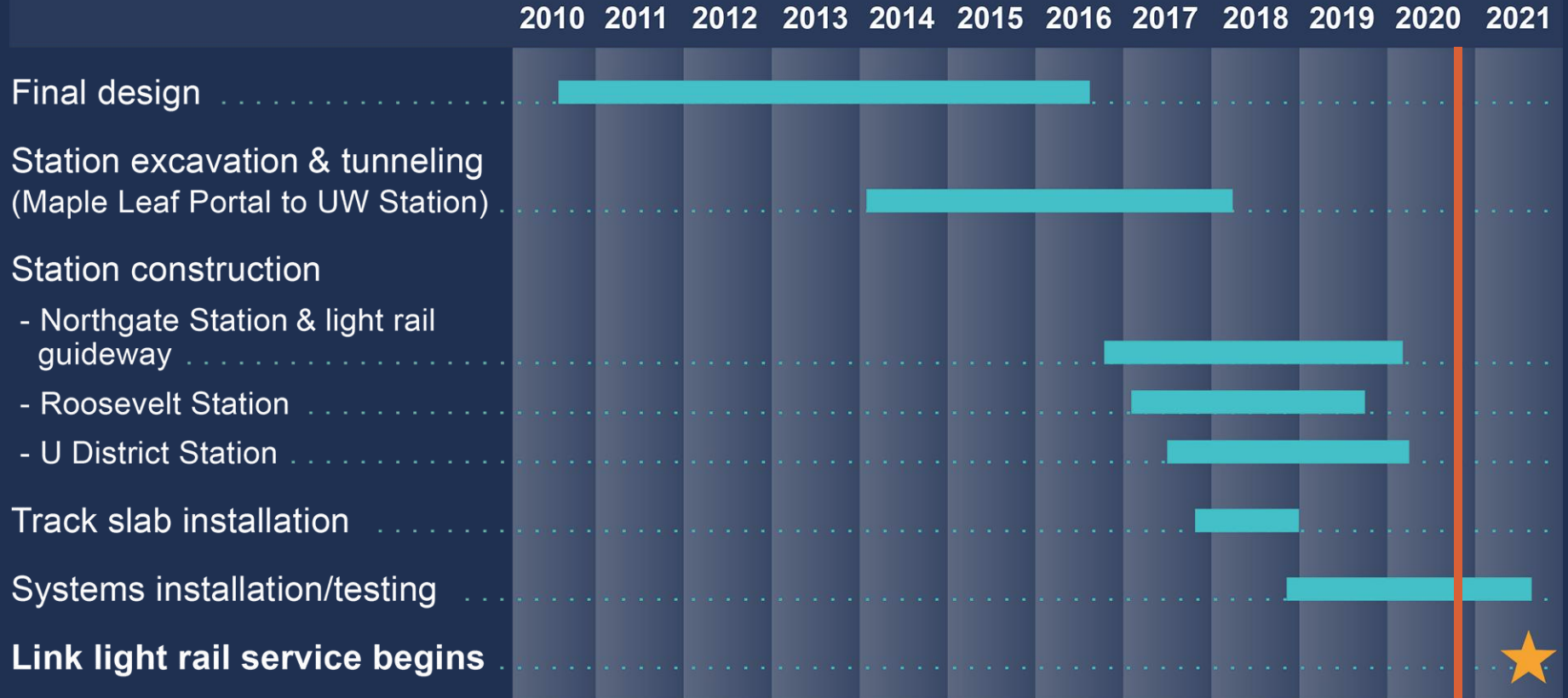
- *Introductions*
  - *Kristin Hoffman (ST) – Light Rail Development Manager*
  - *Andrea Burnett (ST) – Community Outreach Corridor Manager*
- *Northgate Link Extension Overview*
  - *U District Station*
  - *Roosevelt Station*
  - *Northgate Station*
- *Lynnwood Link Extension Overview*
- *Q and A*



# Northgate Link Extension Snapshot

- **4.3 mile** light rail extension
  - 3.4 miles in tunnel – UW Station to NE 94th Street
  - **Underground stations** at U District and Roosevelt
  - **Elevated station** and **below-grade parking** at Northgate
  - Service starts **Fall 2021** and will generate **41,000 – 49,000 daily riders** by 2022.

# Northgate Link Schedule



# U District Station

## Significant features:

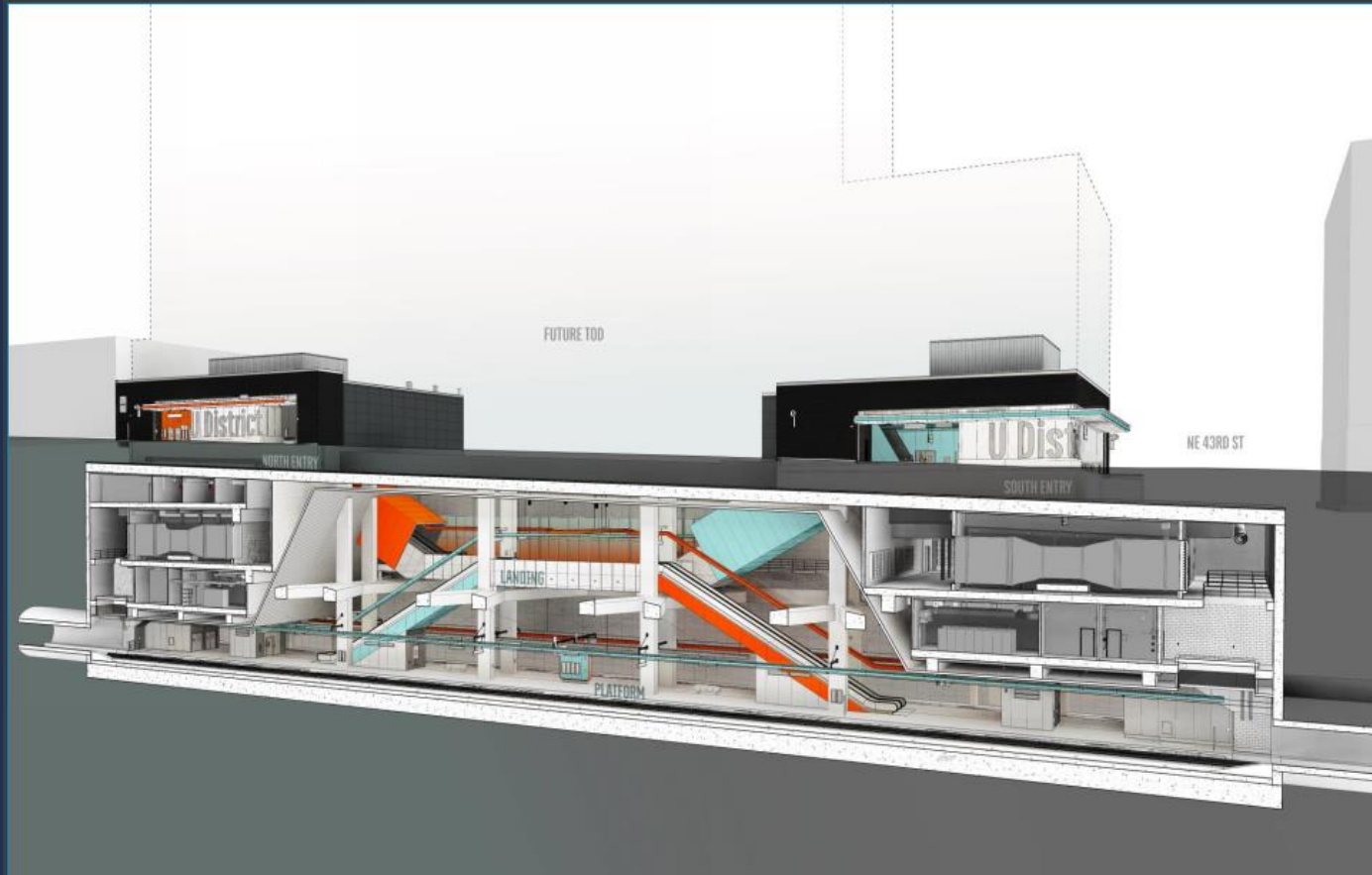
- Located at Brooklyn Ave NE between NE 43<sup>rd</sup> and NE 45<sup>th</sup> St
- 80 feet below ground
- **Two station entrances**; elevators, escalators and stairs at both
- **Bicycle storage**
- Brooklyn Ave NE & NE 43<sup>rd</sup> restored as **City Green Streets**
- Accommodates building above station
- Station construction completed Spring **2020**



# U District Station (site plan)



# *U District Station* (section)



# *U District Station* (exterior photos)



South entry looking NE



North entry looking S



South entry looking E



North entry looking N

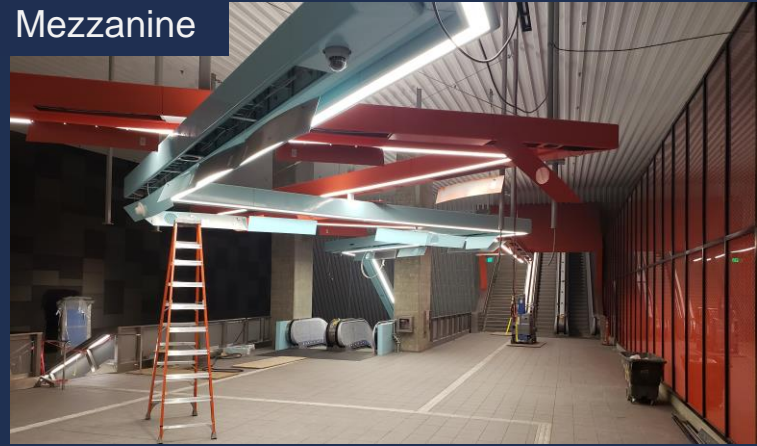


# U District Station (interior photos)

North entry



Mezzanine



Escalator



Platform



# Roosevelt Station

## Significant features:

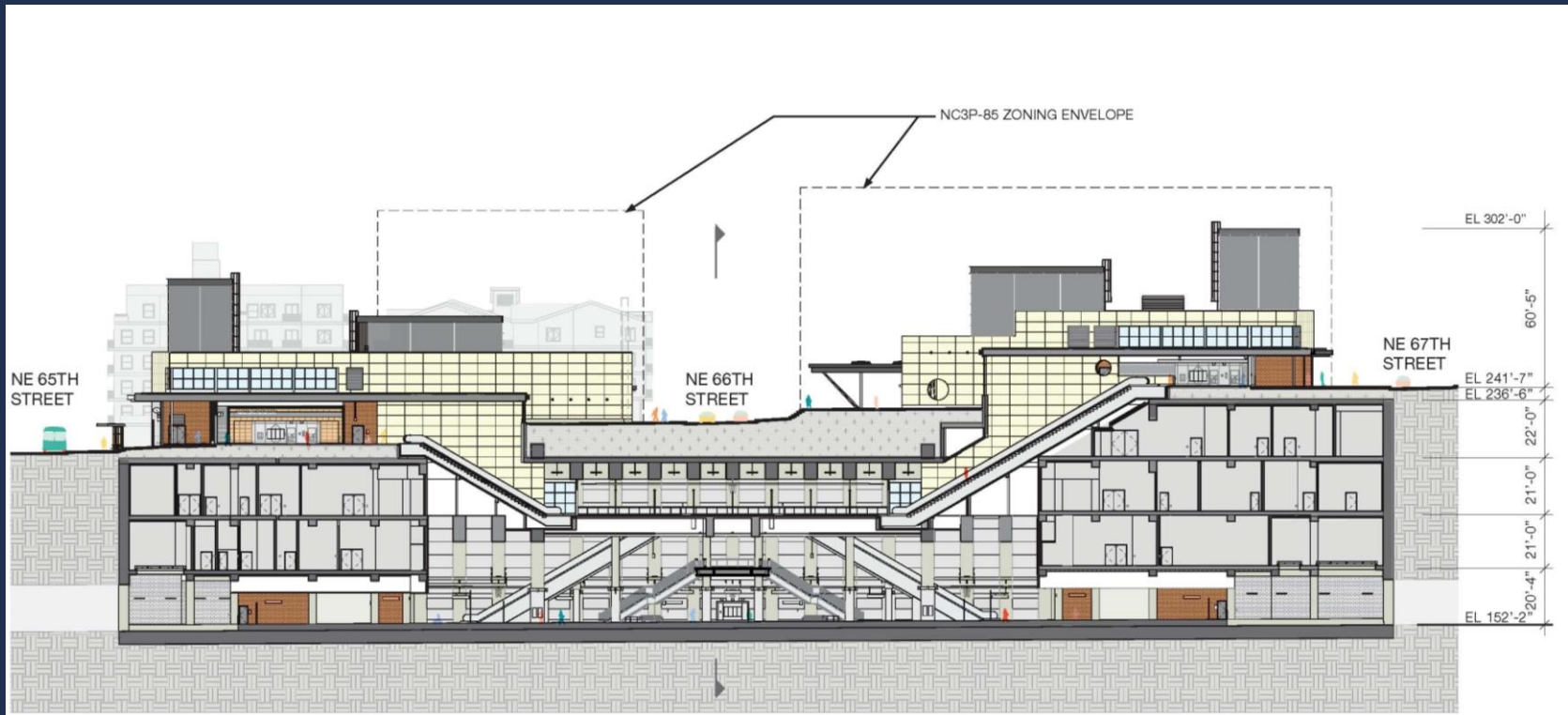
- Located at 12<sup>th</sup> Ave NE between NE 65<sup>th</sup> & 67<sup>th</sup>
- 80 feet below ground
- **Two station entrances**; elevators, escalators & stairs at both
- **Bicycle storage**
- **Bus connections** on NE 65<sup>th</sup> St, 12<sup>th</sup> Ave NE & Roosevelt Way NE
- Station construction completed **Fall 2019**



# Roosevelt Station (site plan)



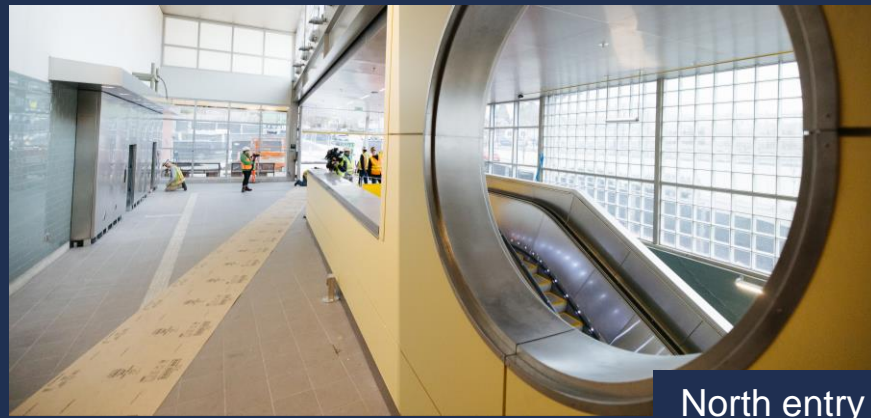
# Roosevelt Station (section)



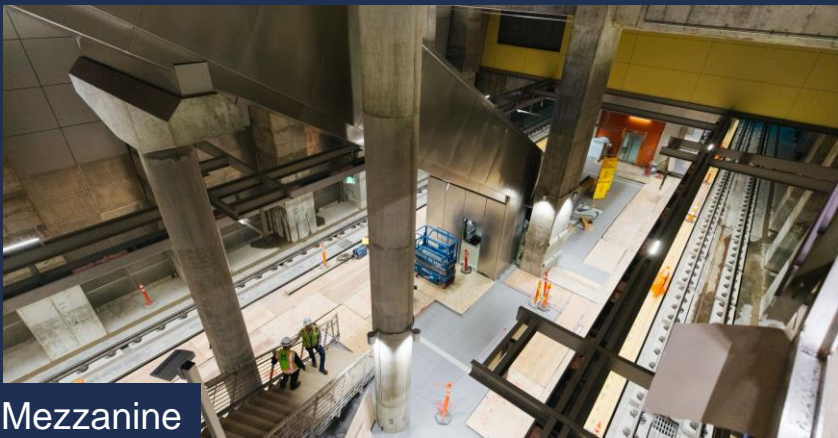
# Roosevelt Station (station photos)



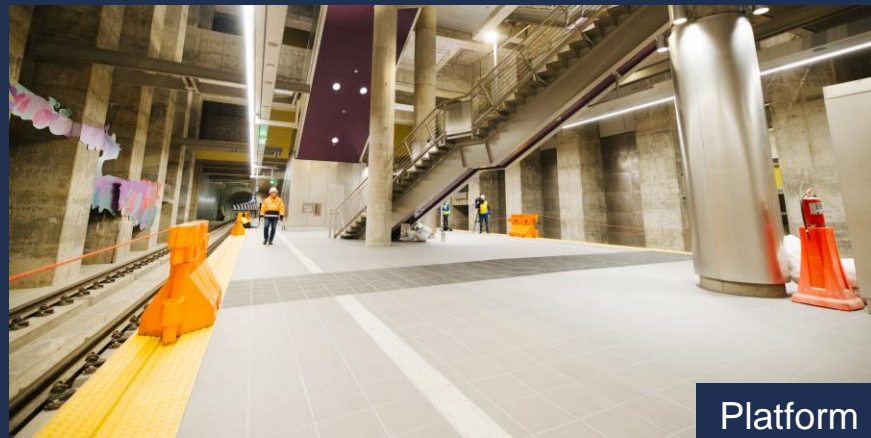
South entry



North entry



Mezzanine



Platform

# *Roosevelt Station Video Tour*

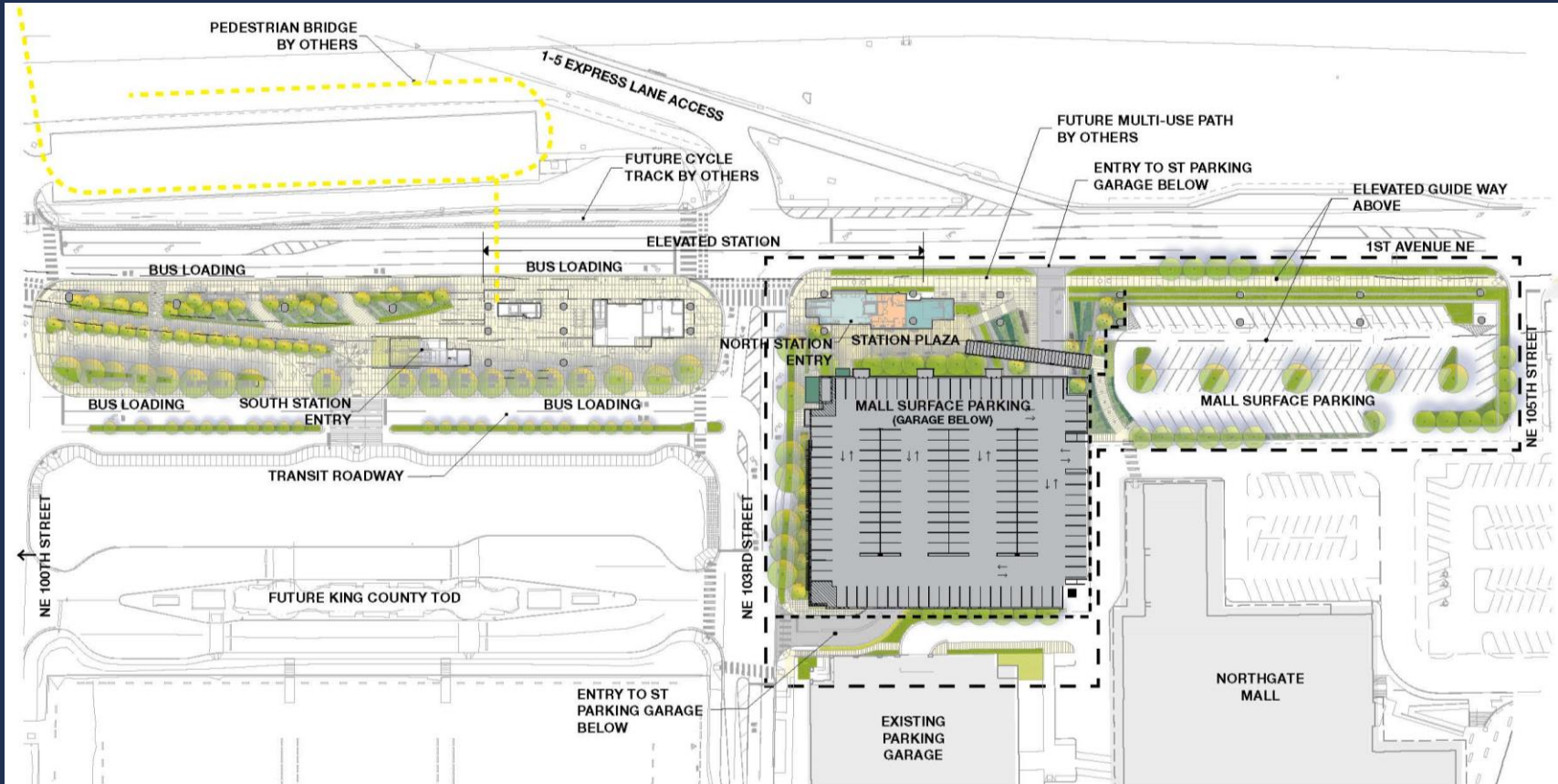
# Northgate Station

## Significant features:

- Located at 1<sup>st</sup> Ave NE, spanning NE 103rd: Elevated guideway and station
- **Two station entrances**; elevators, escalators and stairs at both
- **Bicycle storage**
- Street level **transit island**
- Station construction completed Fall **2020**
- 447 stall/partially below-grade **parking garage**
- Designed to accommodate City of Seattle **ped/bike bridge over I-5**



# Northgate Station (site plan)





# Northgate Station (section)



# Northgate Station *(station photos)*



Platform



Mezzanine



Mezzanine looking S



Busway looking N

# Northgate Station (station photos)

South entry



Tunnel to guideway

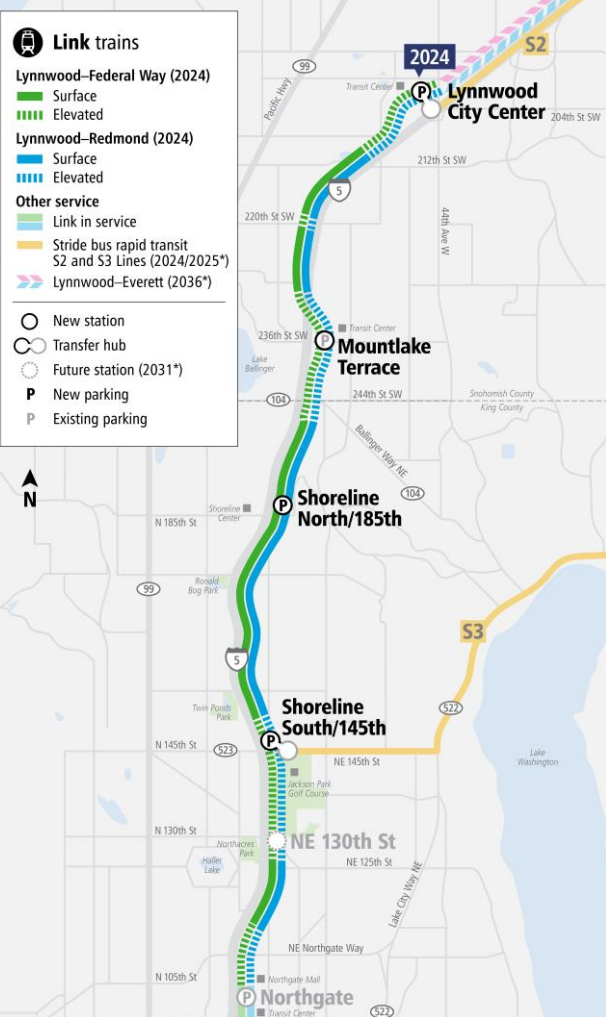


Busway looking S



Track placement





# Lynnwood Link Extension

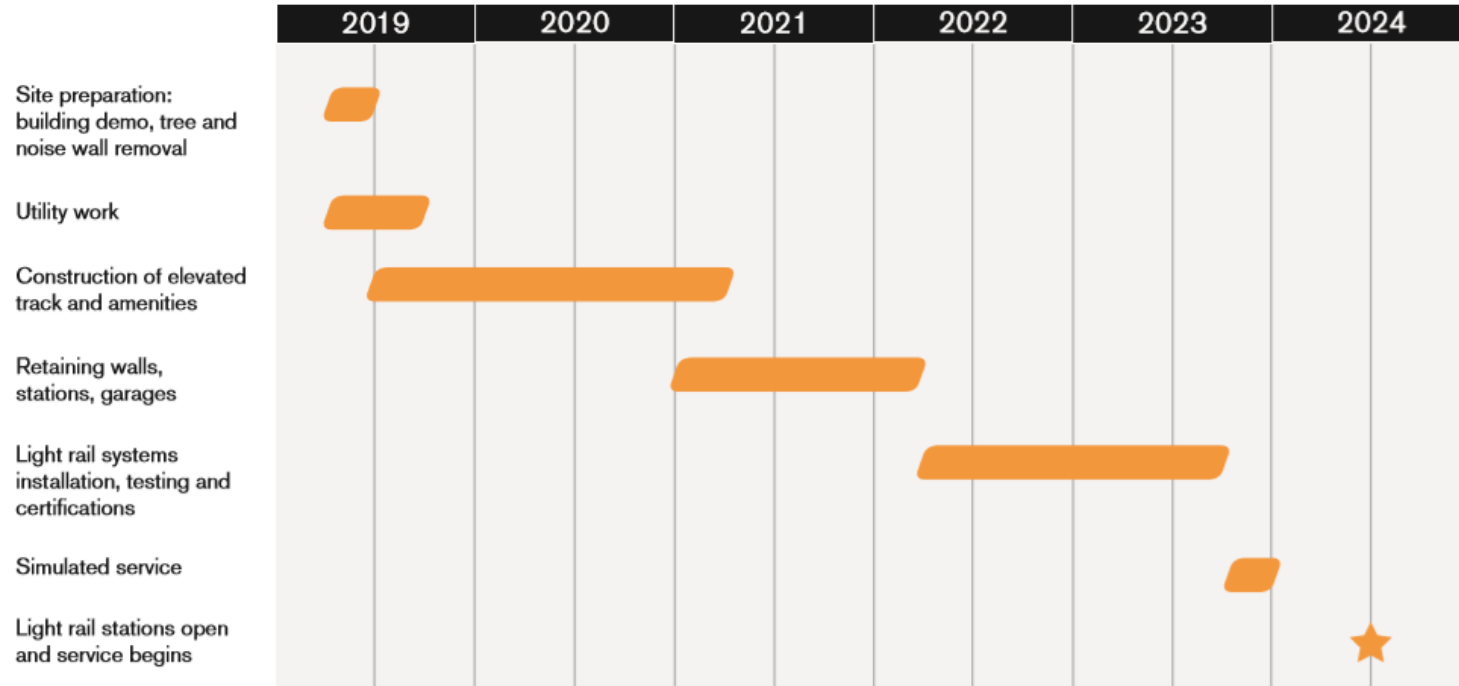
- 8.5 mile extension - Northgate to Lynnwood City Center
- 4 stations:
  - Shoreline South/148th – elevated
  - Shoreline North/185th – at grade
  - Mountlake Terrace – elevated
  - Lynnwood City Center – elevated

# Construction Schedule

## General Project Sequencing

How are we building 8.5 miles and 4 stations by 2023?

### Elevated guideway construction sequencing



# Typical *elevated* light rail construction sequence

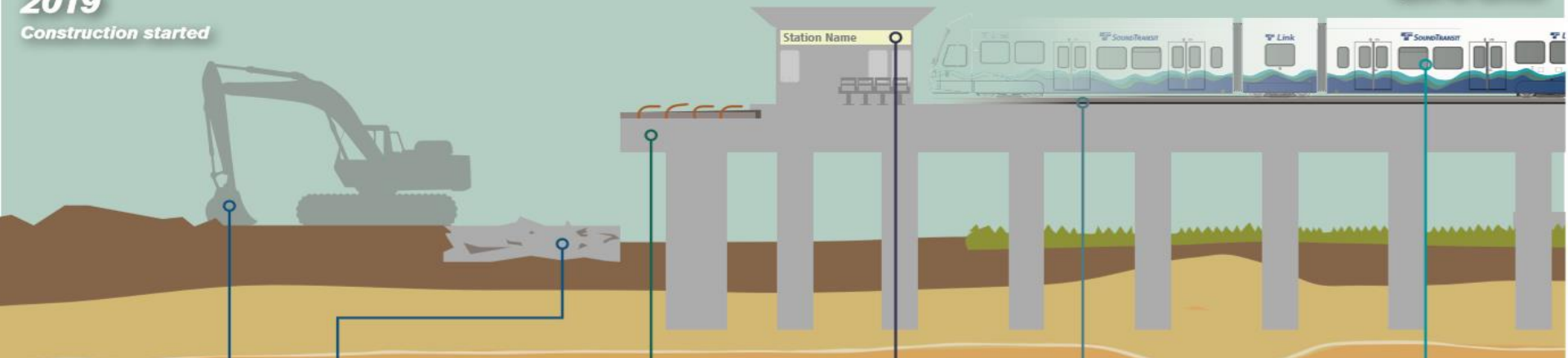
Lynnwood Link's light rail construction includes building at-grade and elevated light rail infrastructure

**2019**

*Construction started*

**2024**

*Open for service*



## Prepare the work zone

Sound Transit must clear select buildings, I-5 noise walls and trees to establish work zones in preparation for construction of light rail. This phase also includes building access roads, erecting temporary noise barriers and establishing fencing to keep the work zone safe.

## Build elevated guideway

Typical elevated guideway construction consists of drilling shafts for column foundations, installing columns and building the guideway and bridge spans.

## Build stations, garages and supporting infrastructure

Next, Sound Transit will build stations, parking garages, supporting infrastructure, and noise walls.

## Install rail and power

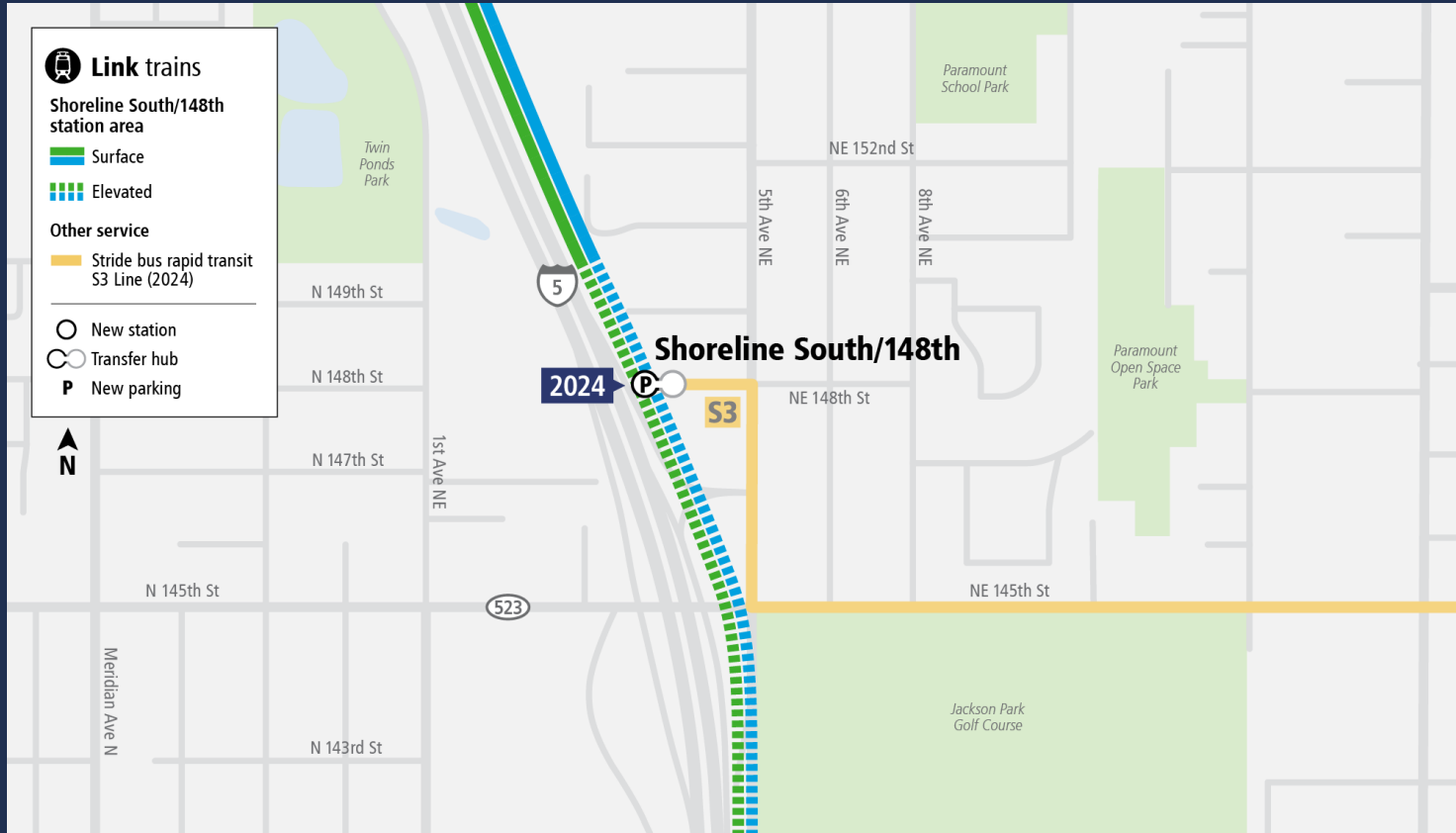
Once elevated guideway has been prepared, Sound Transit installs track and wire while placing poles and ancillary structures that power the system and operate the signals.

## Install and test systems

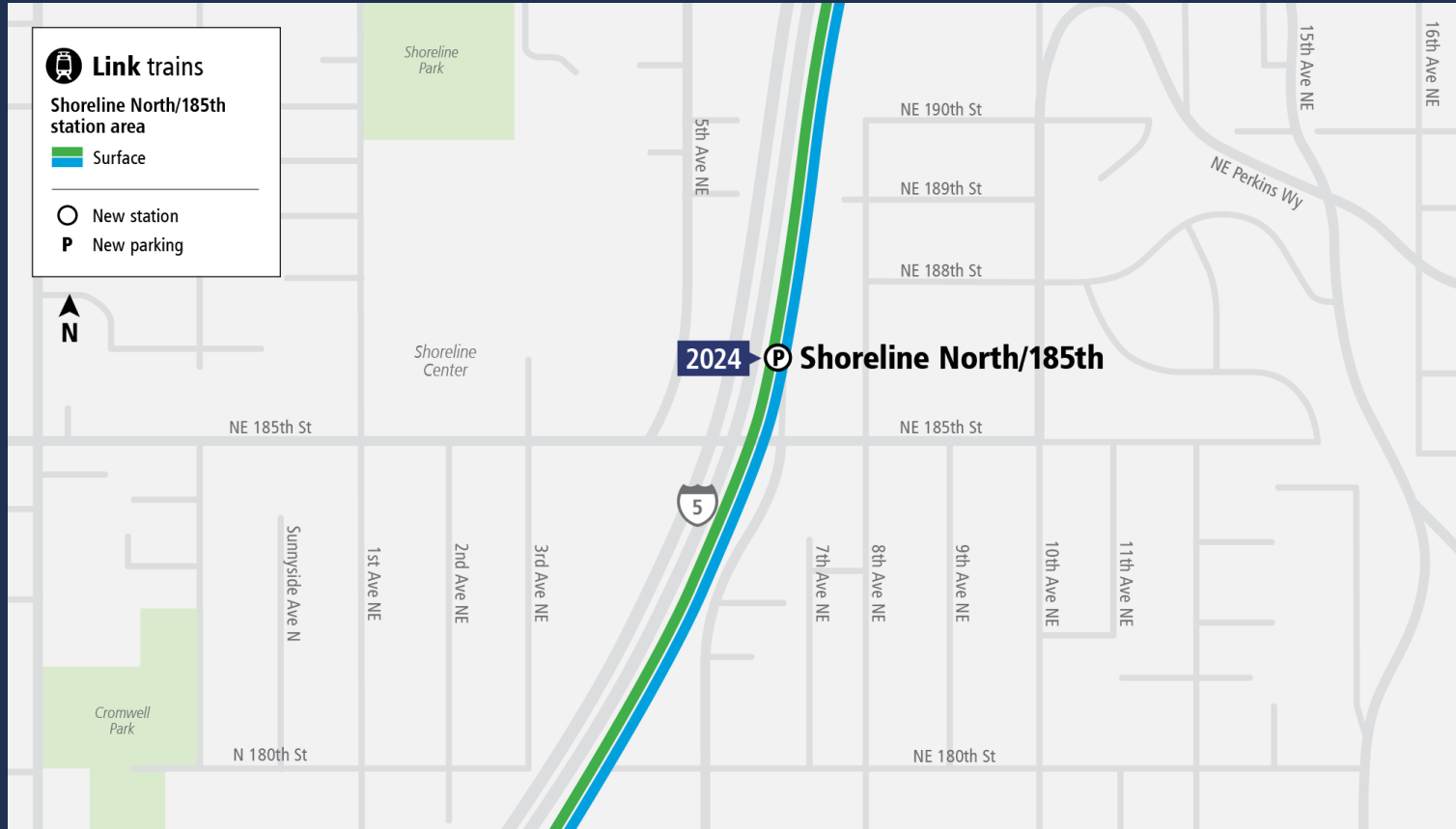
Before light rail opens to passengers, Sound Transit completes a safety certification process testing communications, safety and emergency systems, as well as signals.



# Shoreline South/148<sup>th</sup> Station

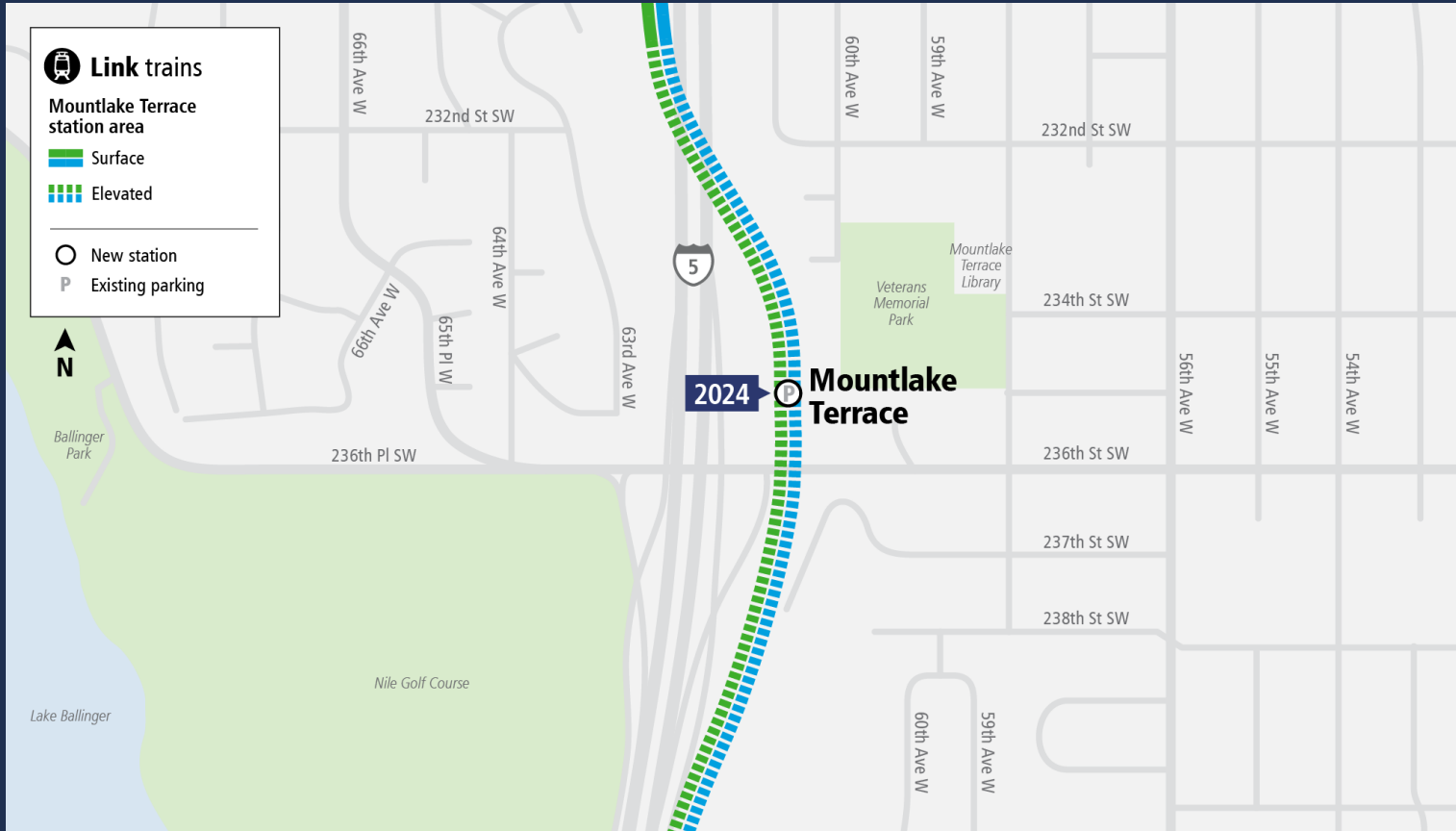


# Shoreline North /185<sup>th</sup> Station

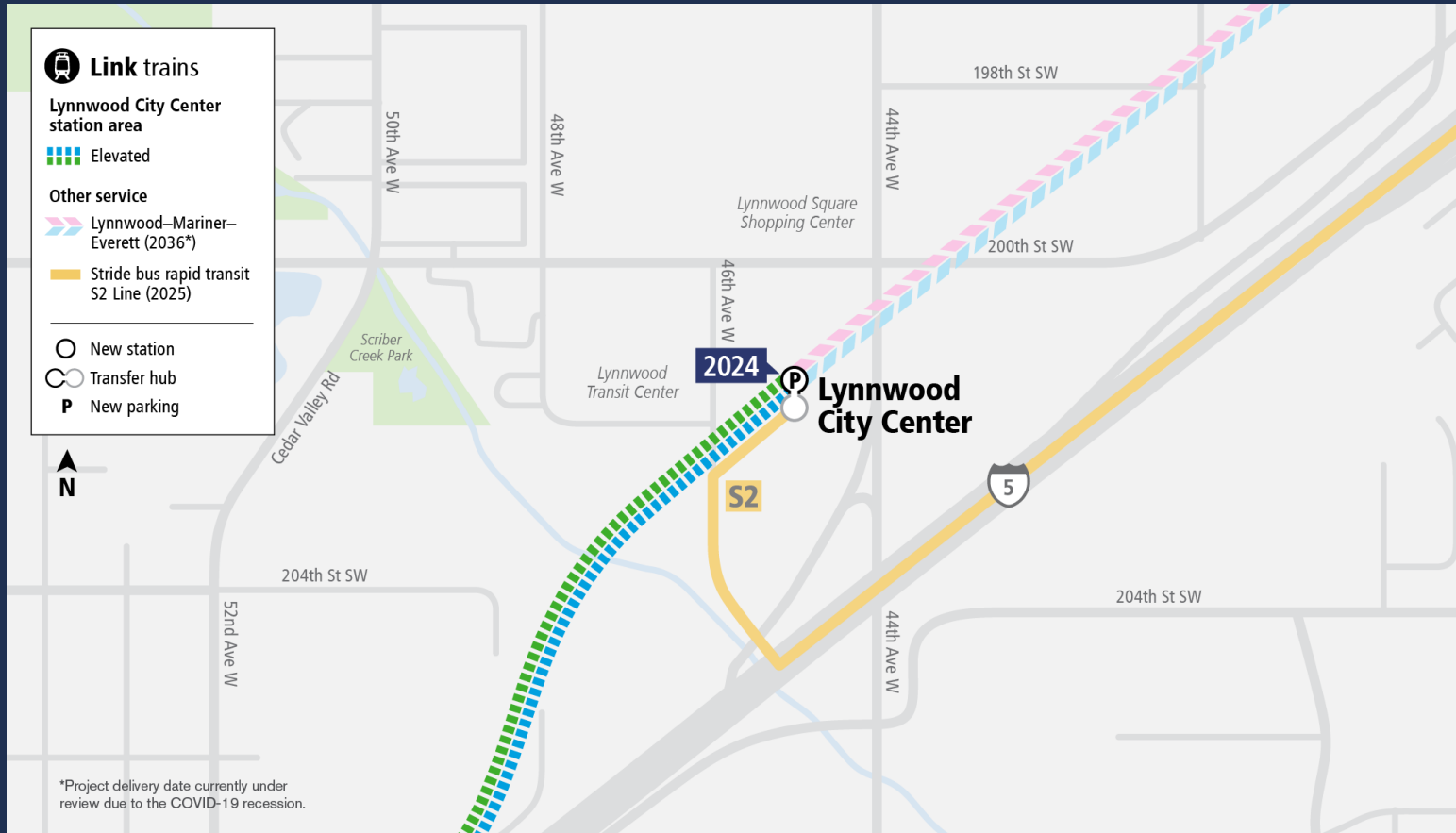




# Mountlake Terrace Station



# Lynnwood City Center Station



# NE 130<sup>th</sup> Street Infill Station

Currently looking for 30% design feedback now through mid-November.

Visit:  
[ne130thstation.participate.online](https://ne130thstation.participate.online)



AERIAL VIEW OF NE 130TH STREET INFILL STATION

# Shoreline South and North Stations



# Mountlake Terrace and Lynnwood City Center Stations

