

A low-angle shot of a white and teal Sound Transit train. The train is moving from left to right. The teal stripe is prominent. The windows are dark, reflecting the sky. The train is under a glass and steel structure.

Sound Transit

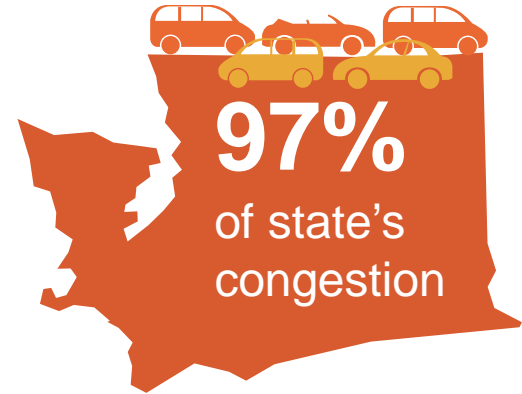
Mercer Corridor Stakeholder Committee
November 4, 2015

 **SOUNDTRANSIT**

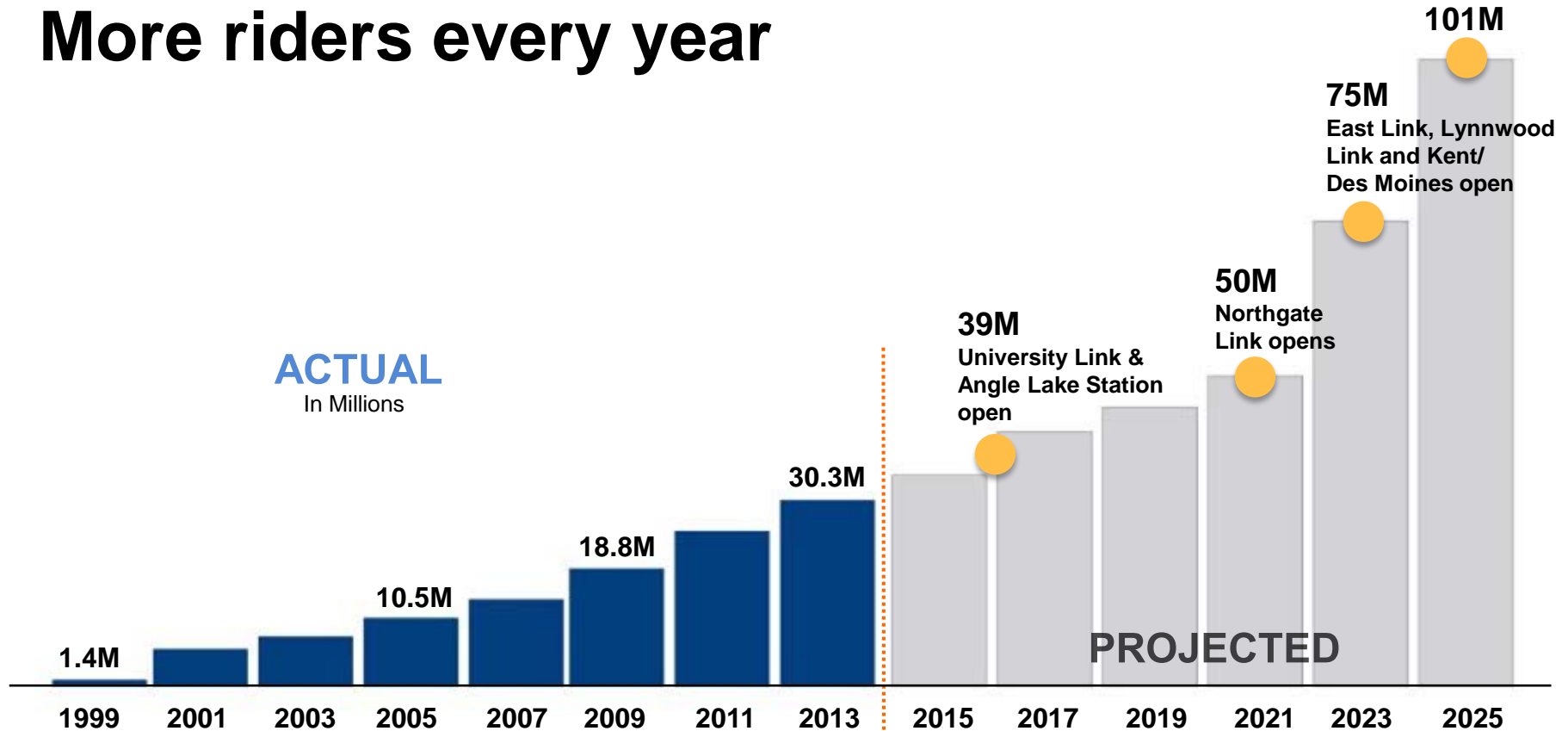
Sound Transit District



Sound Transit District



More riders every year



Source: Sound Transit ridership reports, service implementation plan and financial plan.

University Link

Stations – Capitol Hill & UW

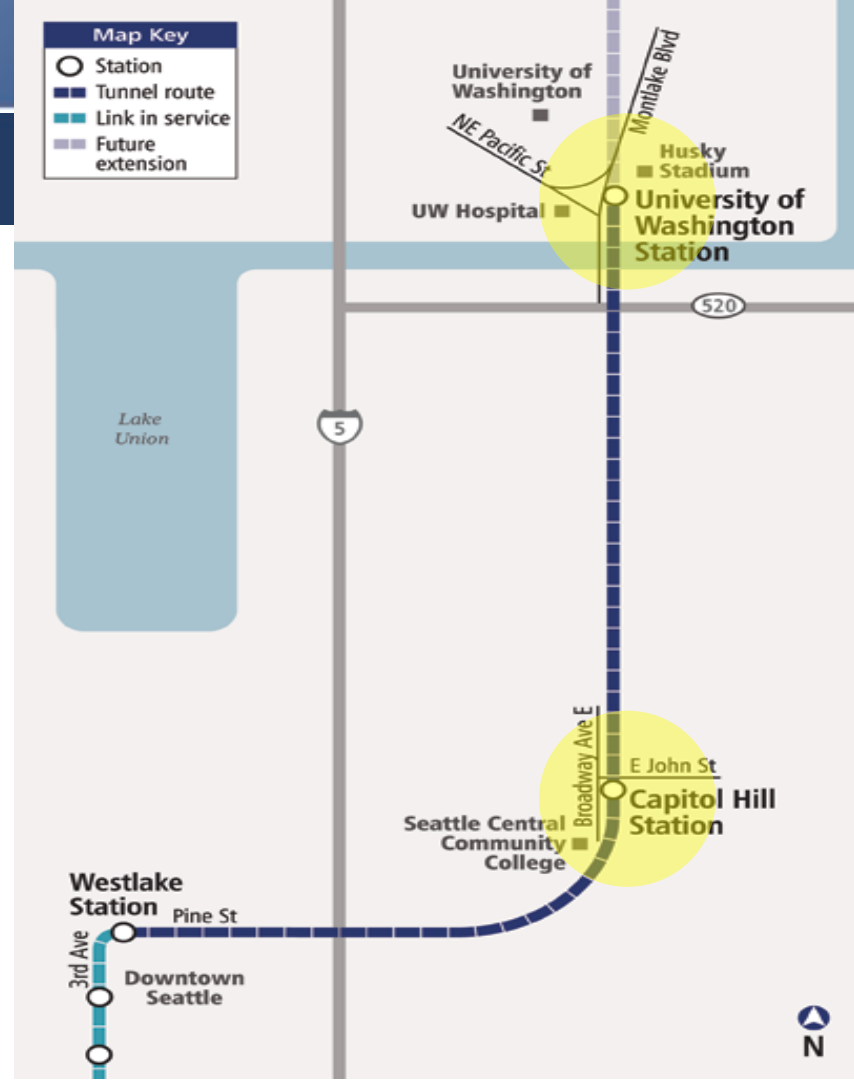
Length: 3.15 miles connects downtown Seattle to UW (Husky Stadium)

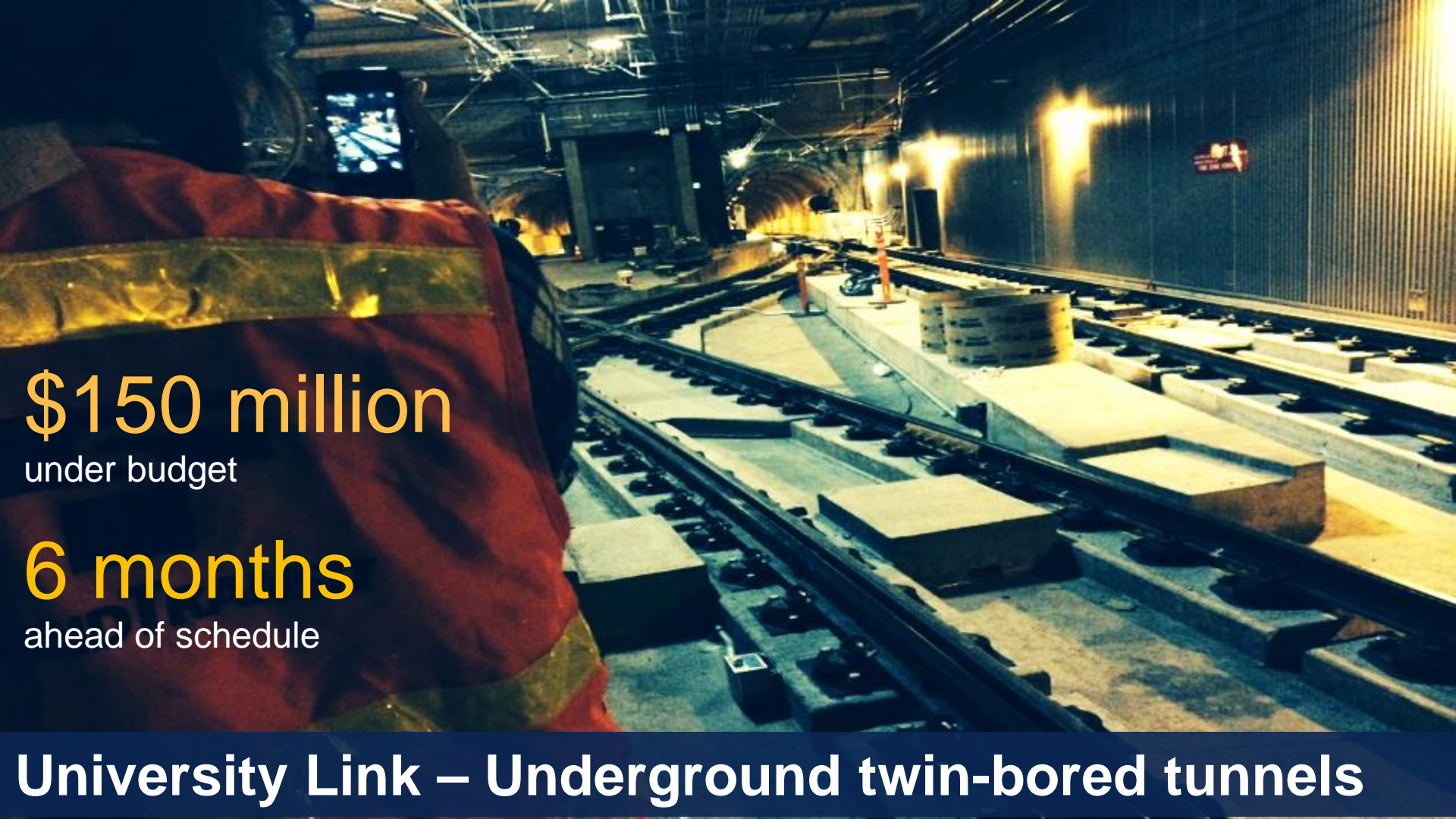
Rider projection: 71,000 daily riders by 2030, bringing the system-wide total to 114,000.

Budget: \$1.9 billion
(Federal Funding - \$813m)

Construction type: Twin-bored tunnels

Opening: 1Q 2016





\$150 million

under budget

6 months

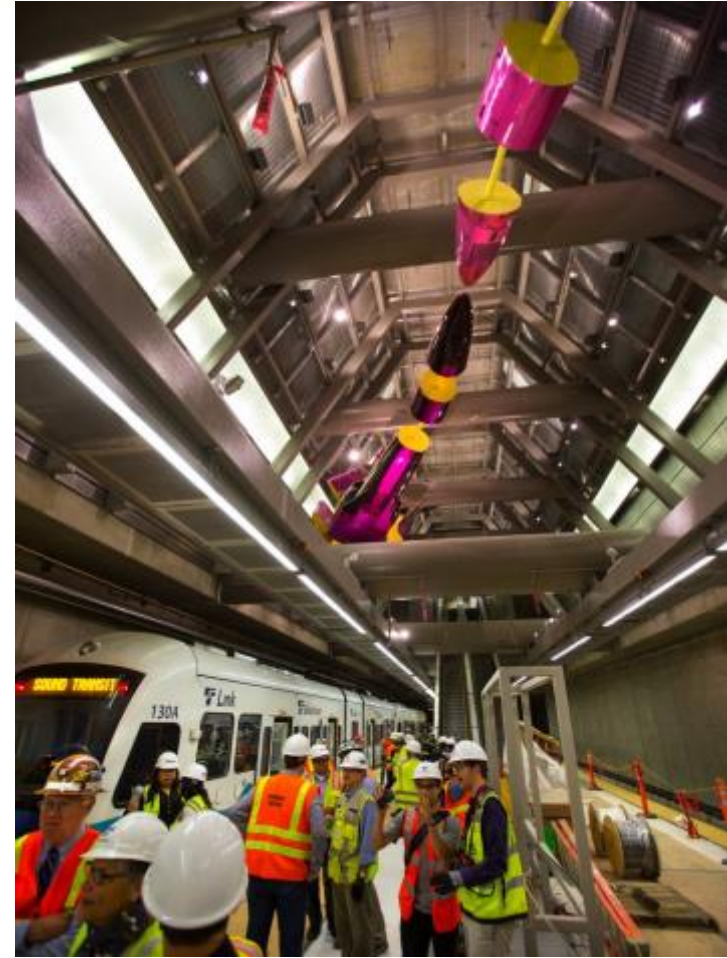
ahead of schedule

University Link – Underground twin-bored tunnels

UW Station



Capitol Hill Station



Capitol Hill Station — Transit Oriented Development (TOD)



Angle Lake Station

Length: 1.6 mile extension of Central Link

- Elevated Guideway and Station
- Parking Garage

Schedule:

- Construction: 2013-2016
- Systems integration and activation: Spring 2016
- Open for service Fall 2016

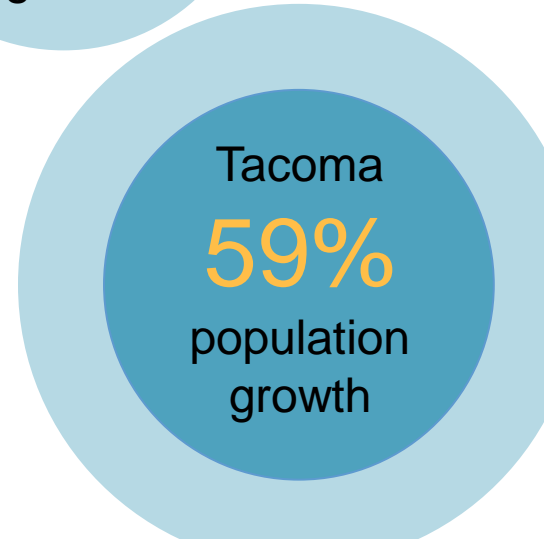
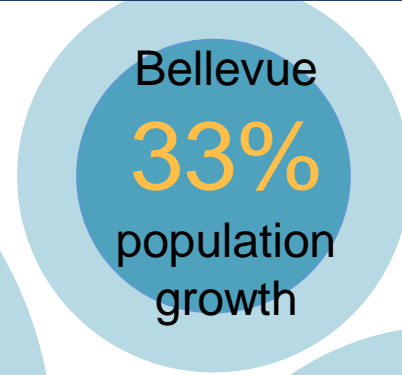
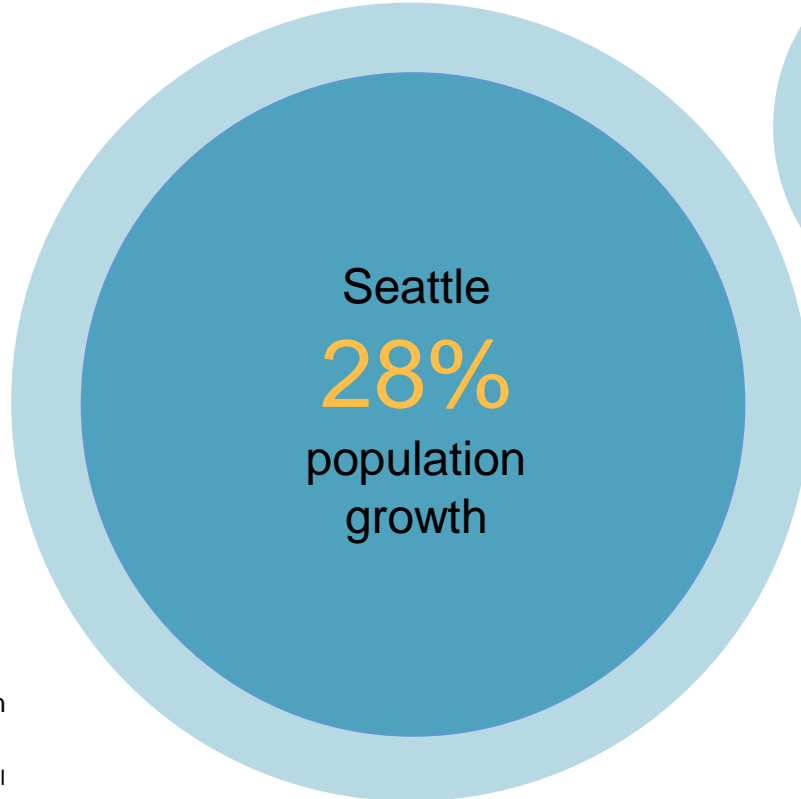
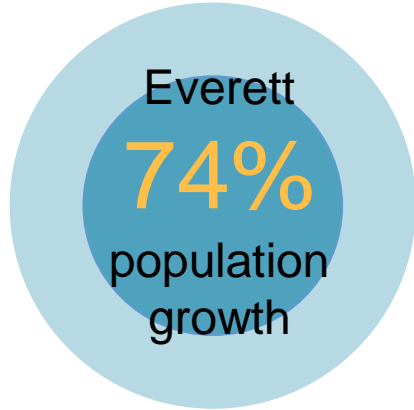
Budget: \$383.2M




Northgate Link Extension



More people are calling this home



 Projected household population
growth by 2040

Source: Puget Sound Regional Council

Planning ahead: Sound Transit 3

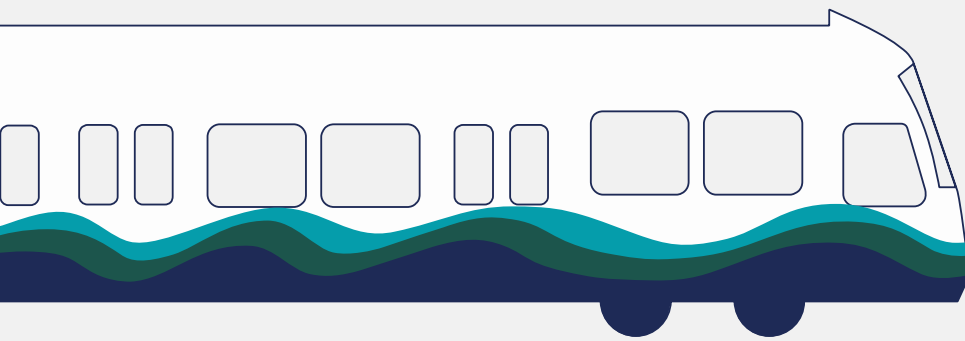
**Long Range
Plan Update**
December 2014

**Seek revenue
authority from
Legislature**
January 2015

WE ARE HERE

System Planning
(Develop ballot measure)
January 2015-mid 2016

**Potential ballot
measure**
November 2016



Sound Transit receives revenue authority



0.5%

Sales and Use Tax

**50 cents per
\$100 purchase**



0.8%

MVET

**\$80 on
a \$10K vehicle**



\$.25*

Property Tax

**\$75 annually
for a \$300K home**

ST3 Candidate Project Highlights

Light Rail Candidate Projects

- Lynnwood to Everett
- Kent/Des Moines to Tacoma
- **Downtown Seattle to West Seattle, and on to Burien**
- **Downtown Seattle to Ballard**
- Overlake to Downtown Redmond
- Totem Lake to Bellevue to Issaquah
- Tacoma Link Extension

Bus Rapid Transit Candidate Projects

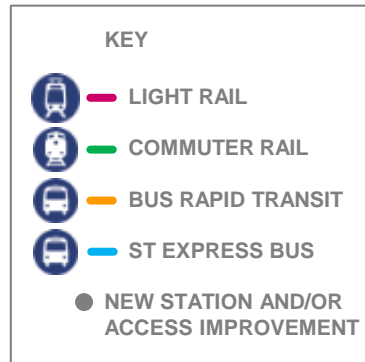
- I-405 Corridor – Lynnwood to Burien
- SR-522 Corridor and 145th St.
- Eastside Rail Corridor: Totem Lake to Bellevue
- Madison Street BRT

Sounder Commuter Rail Candidate Projects

- Additional Service and Access
- Platform extensions
- Extensions to DuPont and Orting

Region-wide Candidate Projects

- Planning studies for future HCT service
- Access, Transit-Oriented Development, and Innovation Funds
- ST Express Bus Service



Learn more at
www.soundtransit3.org

ST3 Ballard-Downtown alignments



Central corridor candidate projects

- C-01a** Downtown Seattle to Ballard (Market Street vicinity), primarily at-grade along Elliott and 15th Avenue
- C-01b** Downtown Seattle to Ballard (Market Street vicinity), primarily elevated along Elliott and 15th Avenue with tunnel options
- C-01c** Downtown Seattle to Ballard (Market Street vicinity), primarily elevated/tunnel options
- C-01d** Downtown Seattle to Ballard (Market Street vicinity), primarily at-grade along Westlake Avenue
- C-01e** Additional potential station in the vicinity of SR 99 and Harrison St.
- C-01f** Additional potential station in Interbay
- C-01g** Additional extension and potential station to the Ballard High School/65th St. Vicinity
- C-01h** Ballard Bridge replacement with Light Rail and bicycle/pedestrian improvements
- C-02** Ballard to University District
- C-03a** Downtown Seattle to West Seattle/Junction, elevated
- C-03b** Downtown Seattle to West Seattle/Junction, at-grade
- C-03c** Downtown Seattle to Delridge/White Center
- C-04** New Downtown Seattle Light Rail Tunnel Connection
- C-05** New Downtown Seattle Light Rail Surface Connection: At-grade

Central corridor candidate projects

- C-06** Downtown Seattle Transit Tunnel existing station passenger capacity improvements
- C-07** Transit Tunnel (International District to Northgate) improvements enabling increases in system frequency
- C-08** Infill Light Rail Station: Graham Street
- C-09** Infill Light Rail station: Boeing Access Road
- C-10** Infill Sounder Station: Boeing Access Road
- C-11** Madison Street BRT
- C-12** Additional parking at Tukwila International Boulevard (TIB) Station
- C-13** West Seattle/Junction to Burien Transit Center
- P-05** Study: Light rail extending from West Seattle to Burien and connecting to the spine serving SeaTac/Airport Station
- P-06** Study: LRT directly linking Burien to Tukwila and Renton.
- P-07** Study: Light Rail to Crown Hill from Ballard
- P-09** Study: LRT from Ballard to Bothell via Greenwood, North Seattle, and Lake City

Next Steps

Fall 2015

- Board Workshop to review analytical results

Early 2016

- Draft System Plan/ST3 ballot measure released for public comment

Summer 2016

- Board adopts ST3 system plan and places measure on November ballot
- How to engage with the Sound Transit Board



A close-up, low-angle shot of a white Sound Transit bus. The bus features a large, stylized wave graphic in shades of teal and blue that curves across its side. Several dark, rectangular windows are visible along the top edge of the bus. The background is a clear blue sky.

Connect with us

SOUNDTRANSIT3.ORG

Facebook.com/SoundTransit

Twitter.com/@SoundTransit

The Sound Transit logo, consisting of a stylized white 'S' and 'T' intertwined within a square frame.

SOUNDTRANSIT
RIDE THE WAVE